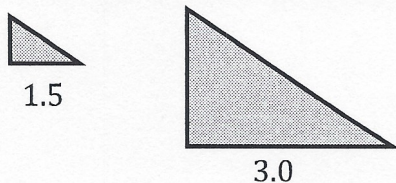
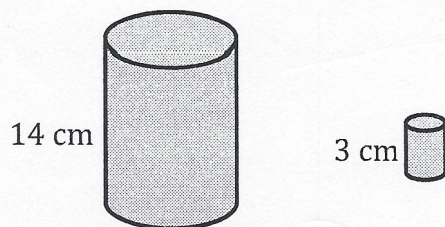


Scale Factors Worksheet – Write all scale factors in all four versions!

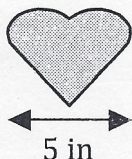
1. What is the scale factor for the following enlargement?



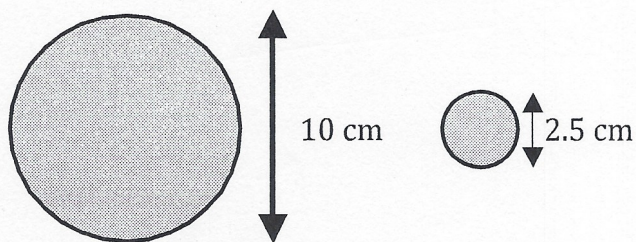
2. What is the scale factor for the following reduction?



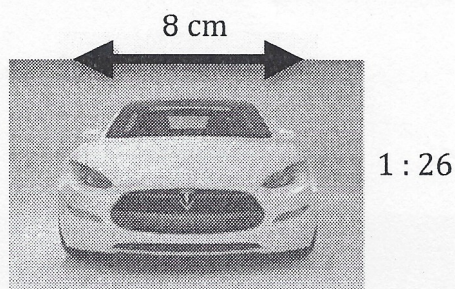
3. The real human heart is approximately 5 inches across. If a scale drawing is made using a scale factor of $8 : 1$, what is the width of the heart in the new drawing?

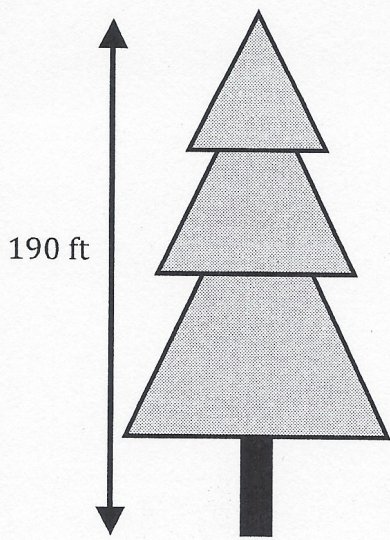


4. What are the possible scale factors for the circles below?

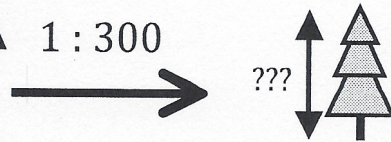


5. A model car is shown with its dimension and scale. What is the width of the original car?



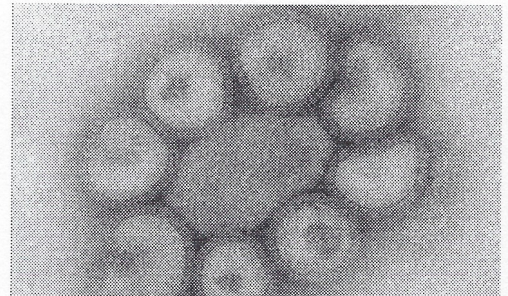


6. A cedar is shown to the left. If the scale model is created accordingly, what would its height be?



7. A river on a topographical map is 1 mm across. What is the scale factor if the real life river is 8 m across? Remember that there are 1000 mm in a meter.

8. The H1N1 flu virus is pictured with the scale as shown. It has a diameter of 5 cm. What is the diameter of the actual virus?



8000 : 1

9. Explain why a scale of 5 : 2 is the same thing as a scale of 2.5 : 1

What would a similar scale be written as follows: 1 : ()