

MATH 9 - Unit 4 Quiz – Version 3

Name: _____

REMEMBER: A relationship is linear only when both the x and the y axis show a pattern!

If an equation has two variables, the graph will be an oblique line

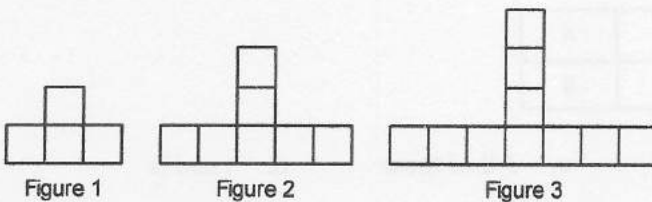
If an equation has only one variable, the graph will be a straight line

Always isolate one variable, and ALWAYS make a table of values

Multiple Choice

Identify the choice that best completes the statement or answers the question.

- _____ 1. This pattern of unit squares continues. Which equation below relates the number of squares, n , to the figure number, f ?



- i) $n = 3f + 4$
- ii) $n = 3f + 1$
- iii) $f = 3n + 1$
- iv) $f = 4 + 3n$

- a. iii b. ii c. iv d. i

- _____ 2. The cost to print stickers is \$6.55, plus \$0.55 per sticker. Determine an equation that relates the total cost, C dollars, to the number of stickers, s .
- a. $C = 0.55s$ b. $C = 6.55 + s$ c. $C = 6.55 + 0.55s$ d. $C = 7.1s$

3. Which tables of values represent a linear relation? (Look for constant patterns for x and y)

i)

x	1	2	3	4	5
y	4	7	12	19	28

ii)

x	0	1	2	3	4
y	0	5	10	15	20

iii)

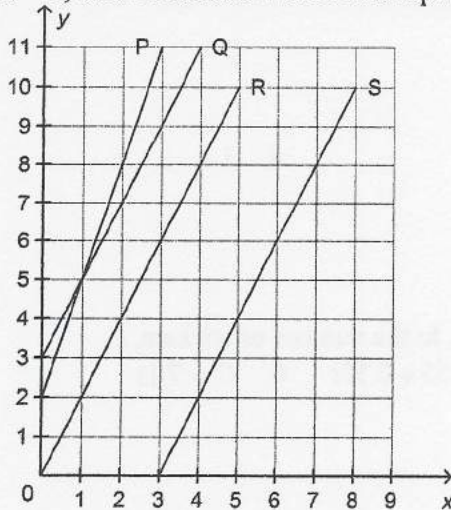
x	1	2	3	4	5
y	5	9	13	17	21

iv)

x	0	1	2	3	4
y	12	11	10	9	8

- a. ii, iii, and iv b. ii and iii c. All of these d. i and iv

4. Which graph represents the equation $y = 2x + 3$? In order to solve this, make a table of values starting at $x = 0$ to $x = 5$, then determine which line represents the values on the table.



- a. Line S b. Line Q c. Line P d. Line R

Name: _____

ID: A

5. Complete the table of values. (Substitute the variable with the value given)

$$y = 9 - 5x$$

x	2	4	6	8
y				

a.

x	2	4	6	8
y	4	-1	-6	-11

c.

x	2	4	6	8
y	4	8	12	16

b.

x	2	4	6	8
y	8	16	24	32

d.

x	2	4	6	8
y	-1	-11	-21	-31

6. Which table of values represents the equation $y = 11 - 4x$? (Do as above)

a.

x	-2	-1	0	1	2
y	5	6	7	8	9

c.

x	-2	-1	0	1	2
y	3	7	11	15	19

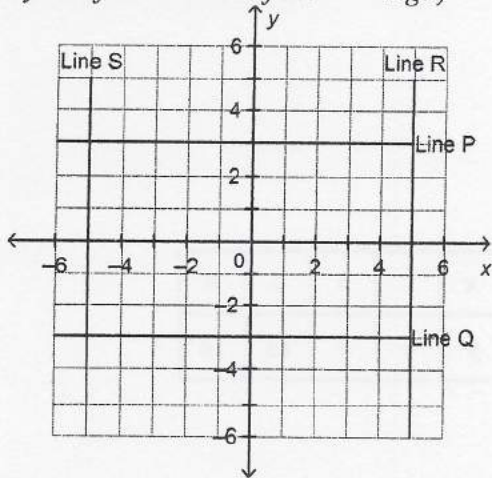
b.

x	-2	-1	0	1	2
y	19	15	11	7	3

d.

x	-2	-1	0	1	2
y	-14	-7	0	7	14

7. Which line is the graph of $x + 5 = 0$? (Remember: You must solve for x , or isolate x . This means x has to be by itself in one side of the "=" sign)



- a. Line R b. Line Q c. Line P d. Line S

8. For the equation $4x - 2y = 8$, isolate or solve for y using algebra, and then choose the correct table of values for $x = -2, 0,$ and 2 .

a.

x	-2	0	2
y	-8	-4	0

c.

x	-2	0	2
y	8	4	1

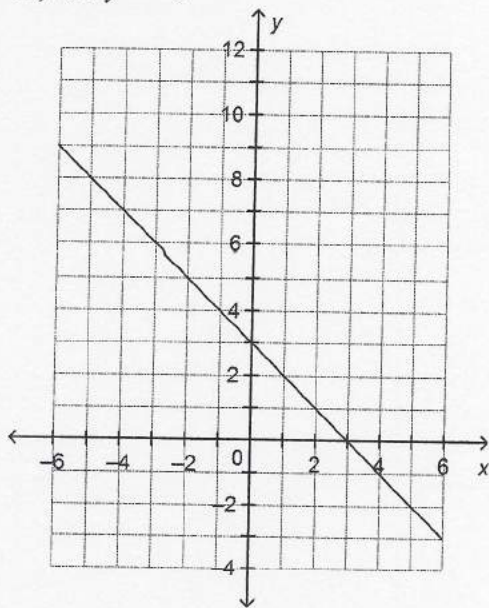
b.

x	-2	0	2
y	-8	0	1

d.

x	-2	0	2
y	0	-4	8

9. Which equation describes the graph? (For each equation, you must isolate a variable, and then make a table of values)
- i) $x + y = 3$
 - ii) $x - y = 3$
 - iii) $y - x = 3$
 - iv) $x + y = -3$



- a. i b. ii c. iii d. iv

Short Answer

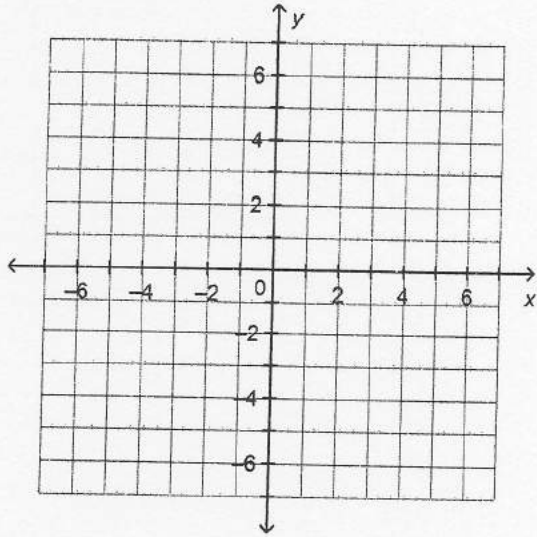
10. In the equation $R = 6(w - 1) + 4$, determine the value of R when $w = 13$.
11. In a table of values for a pattern, $P = 17$ when $n = 2$. Which equation might represent the pattern?
- i) $P = 17n$
 - ii) $P = 9n$
 - iii) $P = 6n + 5$
 - iv) $P = 17n - 9$

Name: _____

ID: A

12. Graph these equations on the same grid. What shape is formed by the lines? (Remember to isolate the variable. Then, draw each line individually. For our purpose, you can join the points on the same line)

- i) $x = -3$
- ii) $x - 5 = 0$
- iii) $y + 2 = 0$
- iv) $y - 5 = 0$



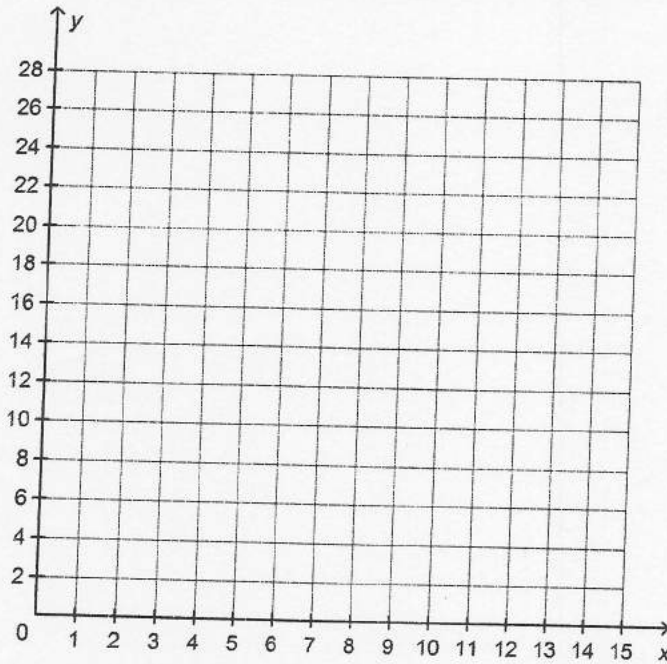
Name: _____

ID: A

Problem

13. a) Create a table of values for the relation $y = 1.5x + 3$, then graph the relation.
Use 0, 2, 4, 6, 8, 10 as values of x .

x	0	2	4	6	8	10
y						



- b) Is the relation linear? How do you know?
c) What is the value of y when $x = 33$?