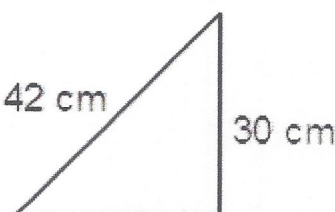
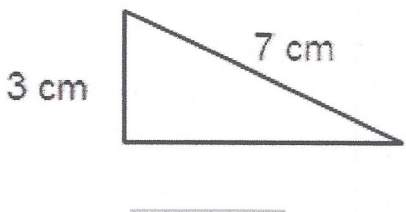
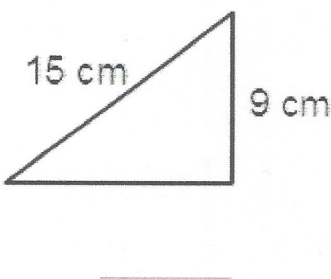
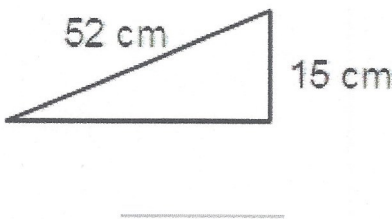
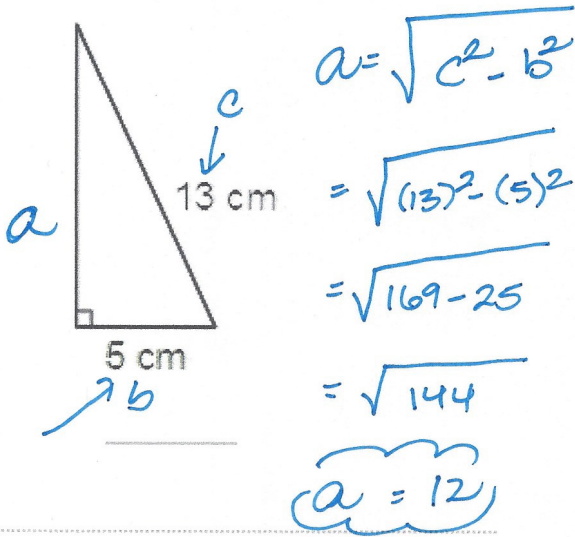
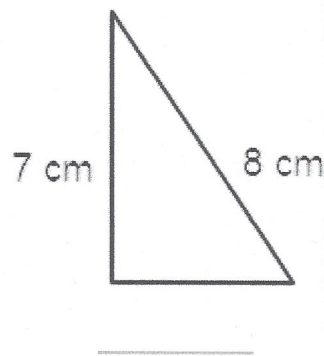
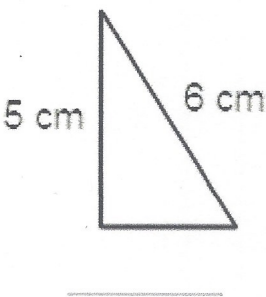
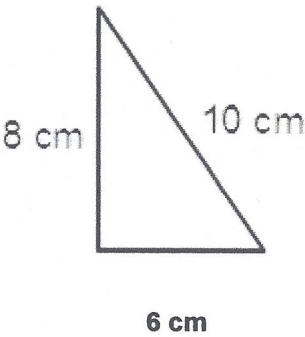
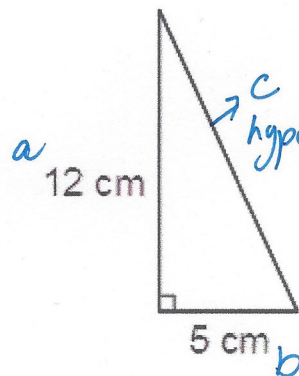
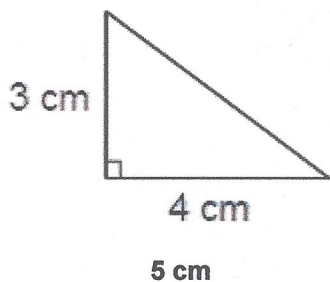


Calculate and write the missing length for each of the right-angle triangles below. Round to two decimal places where necessary. The first one is done for you.



Calculate and write the missing length for each of the right-angle triangles below. Round to two decimal places where necessary. The first one is done for you.



$$c = \sqrt{(12)^2 + (5)^2}$$

$$\text{hypotenuse} = \sqrt{144 + 25}$$

$$c = \sqrt{169}$$

$$c = 13$$

